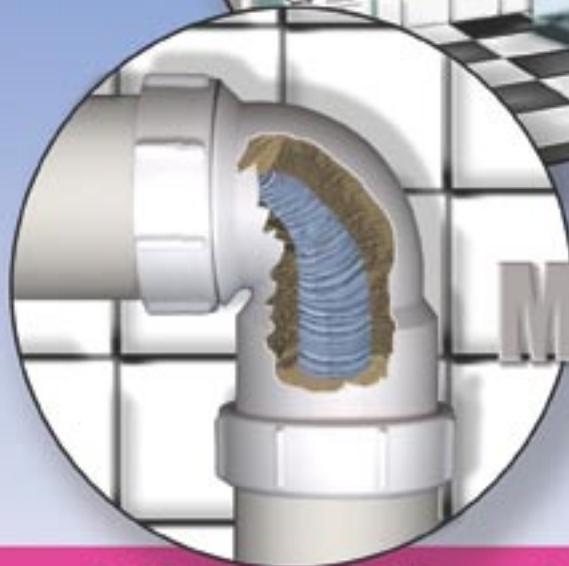


Hotels, Commercial Kitchens & Toilet Drainage



Solving
Drainage
Problems
at Source

Made Easy!

Avoiding
Problems & Solutions

Money saving



Aluline

Protect your drains from build-ups, blockages & comply with current legislation from as little as one pound per day.

Prevents:

- **Drain & Treatment Plant failures**
Kitchen shut downs.
- **Contravention & Prosecution**
of drainage offences.
- **Costly Drain Cleaning.**

The AluTrap

The Natural Solution

To a common every day problem in the catering and food processing industries. The Alutrapp means you can forget odours & costly blockages in your drainage system.

The Alutrapp Grease Trap system is

- Available above or below ground
- Hygienic stainless steel
- Economic
- Reliable
- Designed for simple installation in new or existing premises

Simplicity in use:

A preset quantity of biological digestion solution is automatically dosed into the grease trap to convert the grease into harmless digestion products (carbon dioxide and water).

Alutrapp is fully compliant with existing building regulations, designed for ease of installation, use & maximum protection for your premises.

Alucare inclusive service ensures peace of mind, complimenting your maintenance plan.

Symptoms



The Answer



The Cure





**Simply fitted into new
or existing systems.**

Eliminate Waste solids from entering & blocking the drainage system.

- Our below bench Pre filters Remove up to two tons of wet waste & solids in one year.

- Problems & Odours removed at source.

- Reduce or eliminate drain blockages.

- Intercept and retain [via a unique removable filter] wet waste solids and greases flowing into your drainage system allowing hygienic & easy disposal of the major cause of drain blockages and odours within the commercial kitchen.

- Reduces the biological & physical load on the Grease Trap, Waste Pipe System & Treatment Plant.



In Sink Heavy Duty Pre filters

- Stops and removes solids from sink waste.
- Can not be used without filter basket in place. Integral on / off valve allows fast & simple removal of easy clean filter basket.
- Space saving under sink fitting into new or existing systems.

Primary In - Floor Gully Filter

- Prevents / Removes floor waste, debris & foreign materials from entering the drainage system.
- Can not be used without easy clean filter basket in place.
- Easily fitted to existing commercial drainage systems. Internal On / Off valve.
- Designed for rugged commercial applications
Manufactured from 304 Grade Stainless Steel



Biodegradable Cleaning & Maintenance Chemicals

- Extensive range of safe & effective products formulated to save you time & money.
- Designed to treat & prevent problems.
- User friendly, Eco friendly reducing the impact on the environment.
- Covering every aspect of the commercial environment, we've products to help in your situation - please call for details!



Grease Trap Maintenance Kit

Designed with the focus on Health & Safety in the workplace.

- Universal kit catering for all makes of Grease Trap.
- Hygienic & Easy to use.
- Contains everything required for safe & efficient cleaning / maintenance.
- Complete with natural biodegradable oil absorbant material suitable for landfill disposal after use.

A - Seed (Accelerated) Treatment Plant Activator

- Specific formulation of bacteria, enzymes & nutrients to degrade animal / vegetable or mineral grease / oils.
- Enhances the natural operation of all Treatment Plants & Tanks





**Infra-red Activated Control
of Urinal water management**

Alusense

For Urinals & toilet cisterns

Are you aware?
Metered water supplied,
is also charged in disposal costs.
You pay twice!

Up to **90% REDUCTION** in metered water costs

- Infra-red flushing systems ensure minimal running costs, eliminating unnecessary waste flushing.
- Optimum Hygiene conditions are maintained as the flushing cycle tracks actual usage, unlike timer set flushing on a predicted cycle.
- Reduction in water & waste costs can quickly recoup the initial installation investment cost, offering further longterm savings.
- Enhanced hygiene conditions result in reduced cleaning and maintenance costs offering even further financial savings.

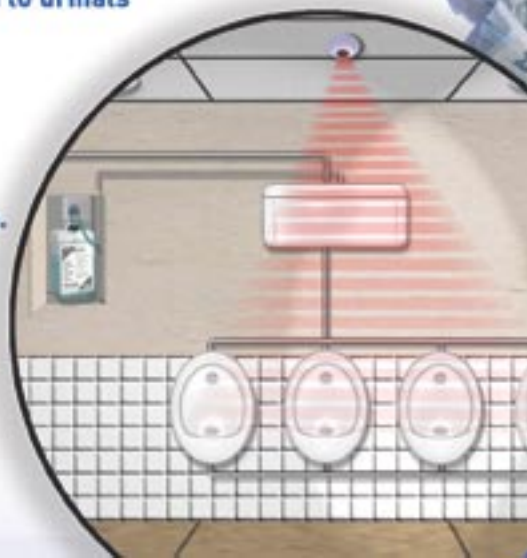
**Now there is a better way to prevent scale build up in urinals.
Automatic Dosing of Aluflush System maintenance chemicals
for free flowing & odour free urinals.**

A preset quantity of solution dispensed to urinals
via our control unit provides:

- Reduced Scale & Odour build up.
- Protects against scale build up in urinal pipework.
- Ensures optimum standards of hygiene.
- Reduces cleaning and maintenance time & costs.
- Compliments the natural processes in drainage systems & treatment plants.



The use of sanitizers in waste pipes
& toilets is not recommended.





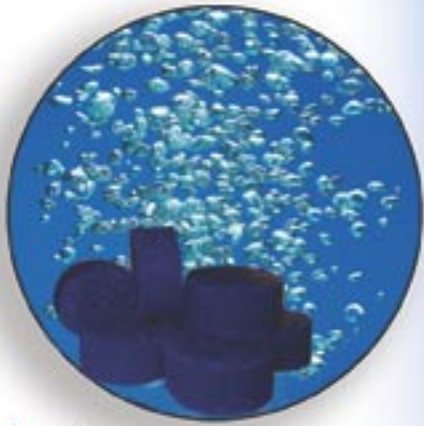
Converts your existing Toilets / Urinals Into a Ultra Hygienic No touch flush system



- Easily fitted to existing systems.
- Eliminates physical contact spread of germs and infections.
- Automatic rinsing after use ensures hygienic conditions.
- No waste of energy, resources & money.
- Financial savings quickly recoupe the cost of initial investment.

Urinal Blocks Alupro Activator blocks

- Small blocks inserted in urinals dispensing a slow release of bacteria to destroy organic build-up & odours in urinals & pipework.
- Economical & essential to improved hygiene & maintenance.
- Odour free toilets + reduced cleaning time & costs.
- Actually treats the cause, not the symptom.



Aluwash Unique wet cleaning system

- Removes all organic food from porous surfaces i.e. Tile grout, cement, wall & floor joints etc. Eliminates the major cause of stale odours etc. which normal cleaning fails to address.



**Alu-Care
Peace of Mind
Service
UK
cover**



The Alu-Care Service Promise is backed by:

- Over 30 Years Experience within the Commercial Drainage Sector.
- National Network of in house Qualified Engineers.
- Regular on site monitoring of our installed equipment.
- Comprehensive equipment and engineer call out Guarantee.
- Hands on (On site) customer training by Aluline Engineers.
- Aluline products are developed to impose no or minimal impact on the environment.
- Call us now, our advice is free!



Contact our Service Department
Tel: **01670 544322** (10 Lines)

E.mail enquiry@aluline.co.uk
Website: www.aluline.co.uk

Aluline Ltd, Aluline House, 1 Aldborough Street, Blyth, Northumberland, NE24 2EU

Tel: +44 (0) 1670 544322 Fax: +44 (0) 1670 544340